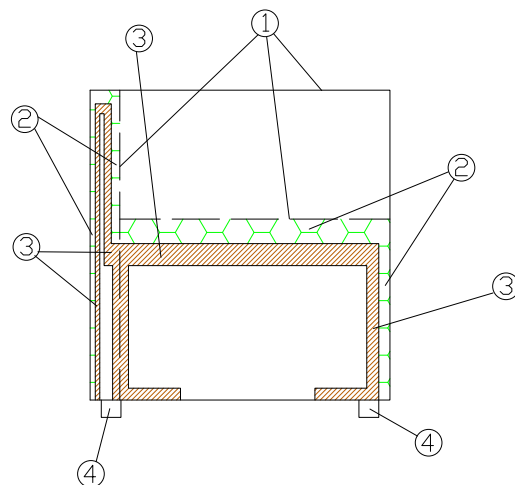
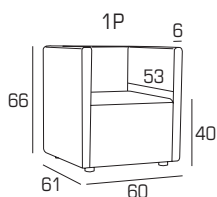




- 1 - fibra di dacron® 100 gr;
- 2 - poliuretano espanso indeformabile di diverse densità;
- 3 - telaio in multistrato e agglomerato di legno;
- 4 - piedi in metallo satinato/piedi in legno tinto.

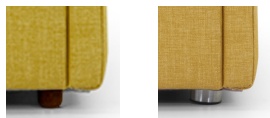


DIMENSIONI:



PIEDI:

P 59 h 4.5 P 53 h 2.5

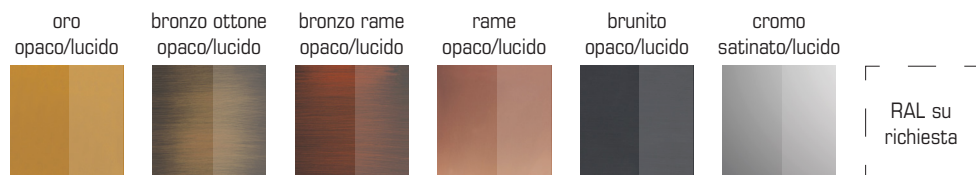


BETTIE

FINITURE LEGNO PIEDI:



FINITURE METALLO PIEDI/BASI:



INFORMAZIONI TECNICHE:

Sfoderabile: NO	kg	m³	mts		kg	m³	mts
BETTIE 1P P 59	29	0.24	2.50	BETTIE 2P P 53	42	0.48	5.00
BETTIE 1P P 53	29	0.24	2.50				
				BETTIE 3P P 59	55	0.68	7.50
BETTIE 2P P 59	42	0.48	5.00	BETTIE 3P P 53	55	0.68	7.50